

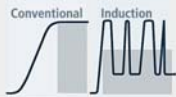
R·T·C·S®

Realtime Temperature Control System

The first and only all-round control and monitoring system for induction technology

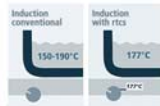
Electronics Fast, safe, controlled

- Electronics temperature monitoring.
- Induction coil temperature monitoring.
- Energy input monitoring.
- Regulation in real time.



Temperature control Instantaneous, precise to 1° C.

- Cable-free temperature monitoring at the pan base or griddle plate.
- Full-surface measurement and control.
- Instantaneous correction of temperature deviations.



Boil-dry protection Dependable, swift, smart

- Important for workplace safety.
- Controls and monitors overheating at the pan base.



Two basic models with differing power outputs, dimensions and number of hotplates. Compact, robust construction, housing and frame made of CrNi steel throughout. Simple fitting thanks to closed frame construction. Install Hold-Line BH/HO/IN 800 provides maximum quality and convenience, coupled with high safety.

- ▶ Frame construction for simple fitting
- ▶ Compact power electronics for a slim line profile and reliable operation
- ▶ Maximum operational safety thanks to multiple protection and monitoring features
- ▶ Electronic mains input power limiter
- ▶ No need to preheat hotplates
- ▶ Heat output ceases the moment a vessel is removed from the hotplate
- ▶ Hotplate area cleans easily (vessels are hot – ceramic stays cool)

Safe operation

- ▶ No radiant heat; what little residual heat there is in the ceran surface comes from the warm vessel
- ▶ No unnecessary room heating by hot radiators, steel plates, gas flames ...
- ▶ Meets the latest regulations: VDE EN 60335-1/-2/36, UL 197; CAN/CSA/C 22.2 Nr. 109, CE compliant

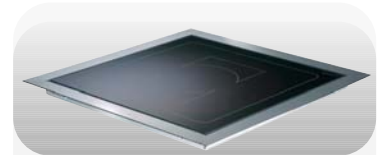
Operation and control

Lamp supply 5V DC / maximum 20mA (green), two stage switched resistor 1-2 kOhm, power control potentiometer 10 kOhm (model BH/HO/IN 800 only)

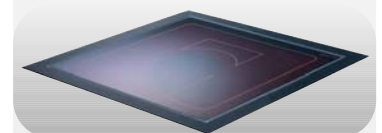
Dimensions in mm	Generator housing	Ceran surface	Frame	Cut-out size
Hold-Line BH/HO/IN 350	274 x 280 x 140	320 x 320	384 x 384 x 45	355 x 355 x 75
Hold-Line BH/HO/IN 700	274 x 280 x 140	320 x 320	384 x 384 x 45	355 x 355 x 75
Hold-Line BH/HO/IN 1050	274 x 280 x 140	320 x 320	384 x 384 x 45	355 x 355 x 75
Hold-Line BH/HO/IN 1400	274 x 280 x 140	320 x 320	384 x 384 x 45	355 x 355 x 75
Hold-Line BH/HO/IN 800	Compact-Version	520 x 320	586 x 386 x 85	550 x 355 x 150

Technical specifications	Voltage	Power	Number of hotplates	Power per hotplates
Hold-Line BH/HO/IN 350	110 / 230 V	350 W	1	350 W
Hold-Line BH/HO/IN 700	110 / 230 V	700 W	2	350 W
Hold-Line BH/HO/IN 1050	110 / 230 V	1050 W	3	350 W
Hold-Line BH/HO/IN 1400	110 / 230 V	1400 W	4	350 W
Hold-Line BH/HO/IN 800	110 / 230 V	800 W	1	800 W

Accessories	w x d x H	Capacity	Lid	Lid dimensions
Round chafing dish, with porcelain insert	ø 300 x 230/600 mm*			
Porcelain insert	ø 300 x 60 mm	2.0 l		
Inductherm GN-insert 1/1	530 x 325 x 65 mm	8.0 l	GN-lid 1/1	530 x 325 mm
Inductherm GN-insert 2/4	530 x 162 x 65 mm	4.0 l	GN-lid 2/4	530 x 162 mm
Inductherm GN-insert 1/3	325 x 175 x 65 mm	2.5 l	GN-lid 1/3	325 x 175 mm



Hotplate with rigid chrome steel frame



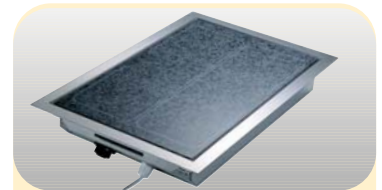
Also available with matt black frame



Central unit: the INDUCS generator



Induction coil connectors simply plug-in



BH/HO/IN 800 compact unit



GN porcelain inserts available in 3 sizes